

Kraemer Proposes to Mine Basalt Rock in Osceola Township

- Eighty Nine Acres of Active Operation
- Activities Would Include
 - Drilling
 - Blasting
 - Crushing
 - Washing
 - Heavy Vehicles
 - On site
 - On Roads

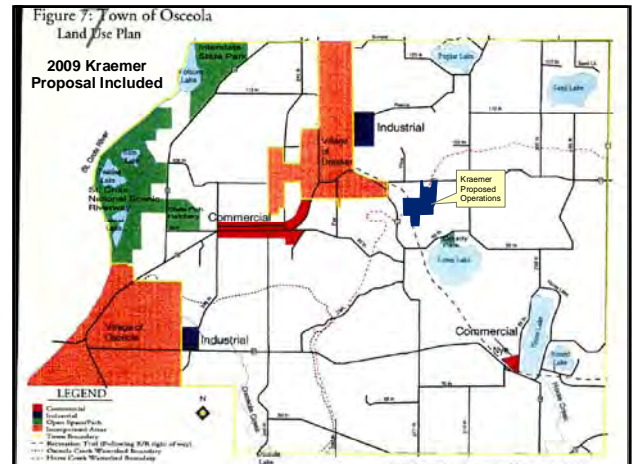
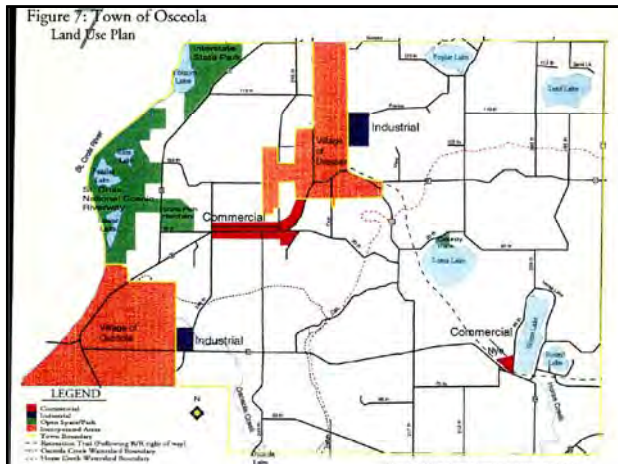
October 11, 2009

Kraemer Proposal Land Use
Wright - Town of Osceola

1

Kraemer's Proposal is an Industrial Land Use

2



Proposed Activity Conflicts With Town's Current Comprehensive Plan

But Is It Incompatible With The Surrounding Land Uses?

5

A cursory review of the number of residences within 1/4, 1/2 and 1 mile indicated "quite a few houses in the general area"



6

What Do Other Mine Sites Look Like?

Review of Current Kraemer Operations
 Provided by Stevens Engineering

- Burnsville
- Mille Lacs

7

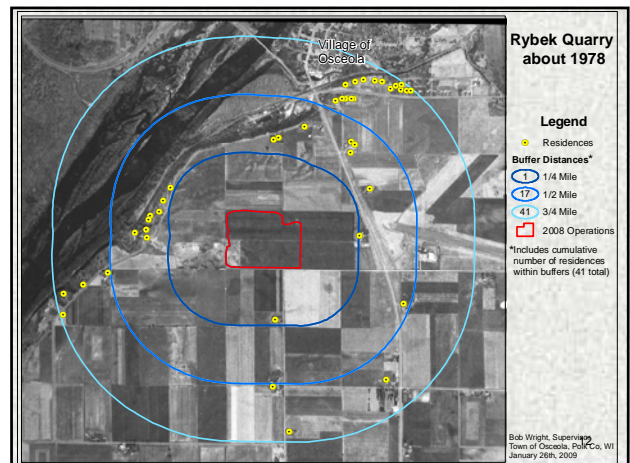
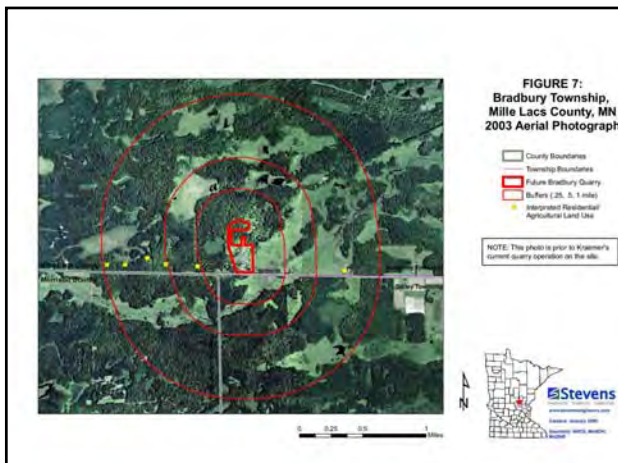
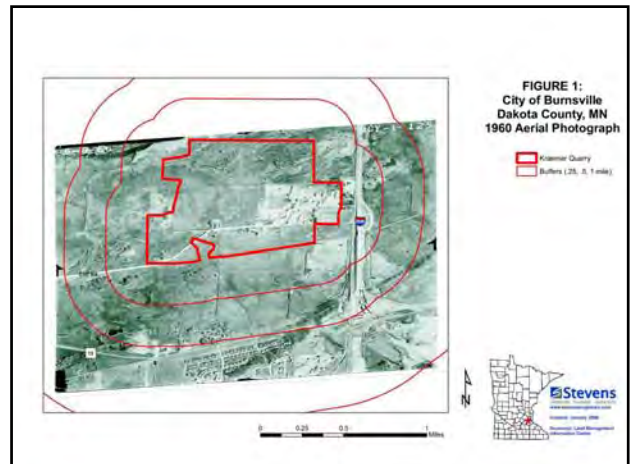
What Did These Sites Look Like At Start up?

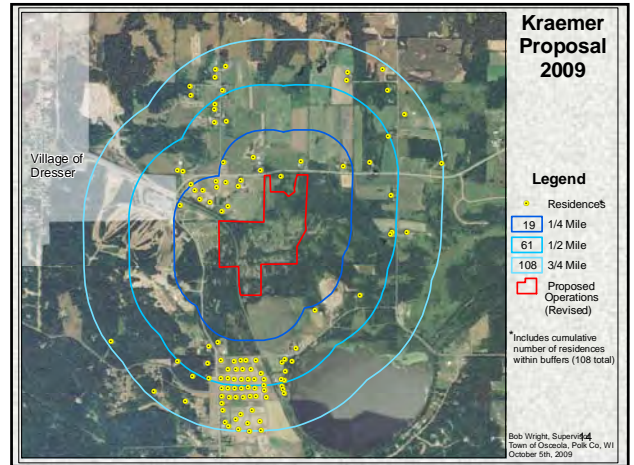
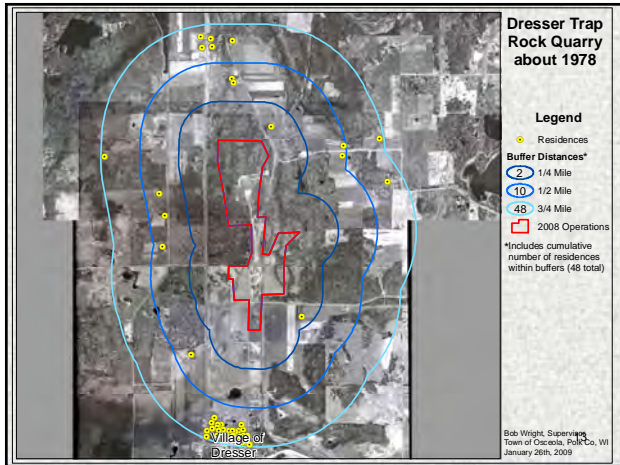
8

Compared and Contrasted Start-Up Land
 Use, Specifically the Number of
 Residences, for the proposed Kraemer
 site and 4 Active Operations:

- 1.Kraemer limestone quarry at Burnsville
- 2.Kraemer granite quarry at Mille Lacs
- 3.Rybek gravel/limestone quarry south of
 Osceola
- 4.Dresser Trap Rock basalt quarry north of
 Dresser

9

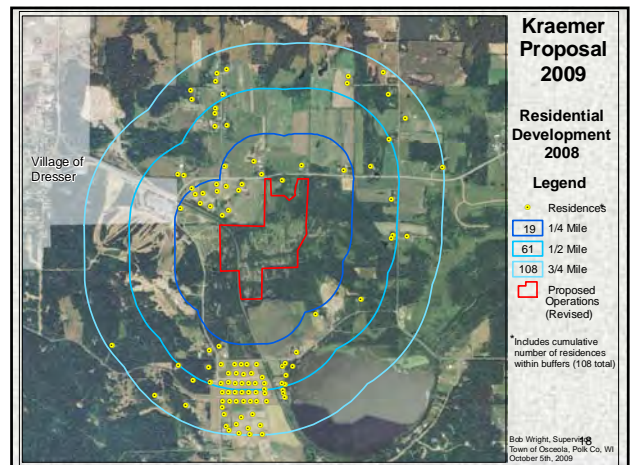
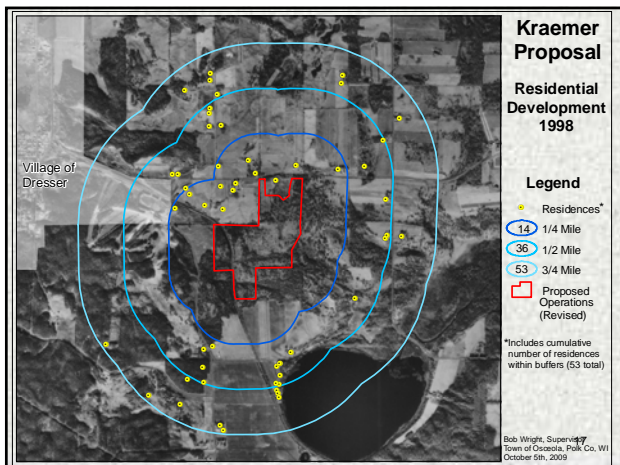
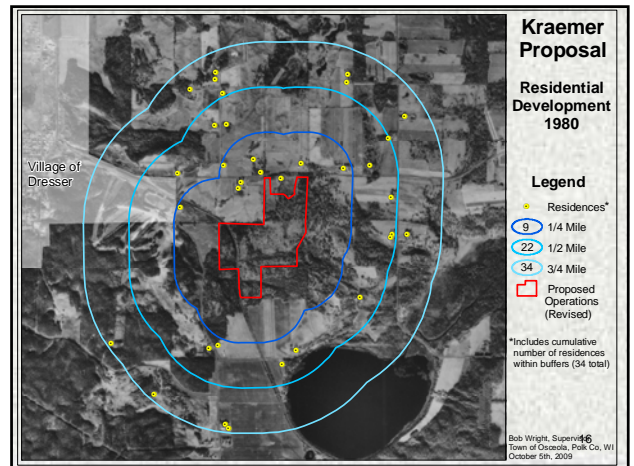




Number of Residences Near Quarry at Beginning of Operations

Quarry	Residences Within		
	1/4 Mile	1/2 Mile	3/4 Mile
Burnsville	0	0	84
Mille Lacs	0	1	4
Rybek	1	17	41
Dresser Trap Rock	2	10	48
Kraemer Proposal	19	61	108

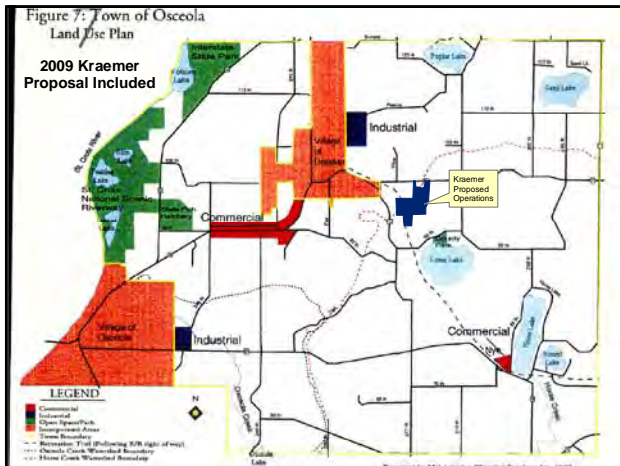
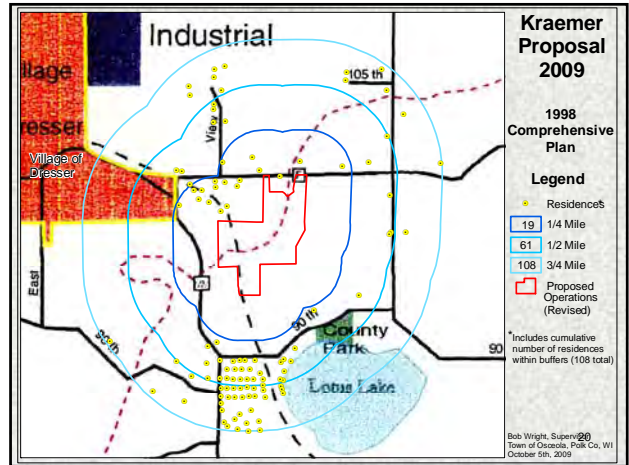
15



Housing Development Trend Surrounding Proposed Quarry

Time Line	Residences Within		
	1/4 Mile	1/2 Mile	3/4 Mile
1980 Rochford Rezone	9	22	34
1998 Comprehensive Plan	14	36	53
2008 Quarry Proposal	19	61	108

19



- Kraemer Proposes to Mine Basalt Rock in Osceola Township**
- Eighty Nine Acres of Active Operation
 - Activities Would Include
 - Drilling
 - Blasting
 - Crushing
 - Washing
 - Heavy Vehicles
 - On site
 - On Roads
- 22

Proposed Activity Conflicts With Town's Current Comprehensive Plan

But Is It Incompatible With The Surrounding Land Uses?

Based on Residential Growth and Land Use in the Area:

- In 1980 Probably Not
 - In 1998 Maybe
 - In 2008 Yes

23